



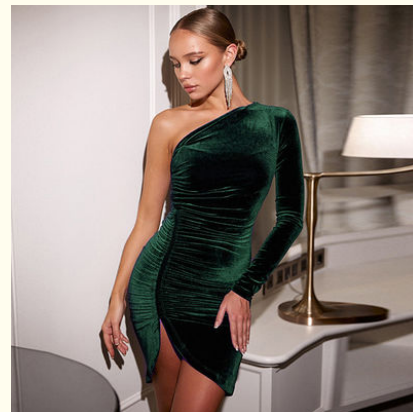
Hip Wrap One Shoulder Tube Dress Stylish Slim Pleated Single Shoulder Dress Solid Color

Our Product Introduction

for more products please visit us on stylishladydress.com

Basic Information

- Place of Origin: china
- Model Number: 3008
- Minimum Order Quantity: expand on
- Price: expand on

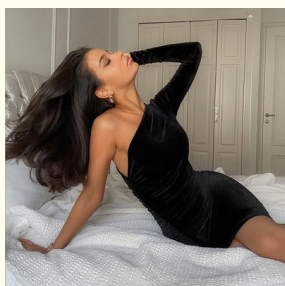


Product Specification

- Dresses Length: Long, Short
- Season: Spring, Summer, Autumn
- Decoration: None
- Length: Long, Short
- Waistline: Natural
- Sleeve Length: Sleeveless
- Neckline: One Shoulder
- Occasion: Casual
- Craft: Wrinkle
- Fashion Element: Slit
- Highlight: **Hip Wrap One Shoulder Tube Dress, One Shoulder Tube Dress Stylish Slim, Slim Pleated Single Shoulder Dress**



More Images



Stylish one-shoulder slim pleated solid color hip wrap dress



Technical Parameters:

Parameter	Value
Product Name	One Shoulder Tube Dress
Decoration	None
Season	Spring, Summer, Autumn
Neckline	One Shoulder
Material	Cotton,polyester Fiber
Size	S,M,L
Color	Customizable
Dresses Length	Long,Short
Waistline	Natural
Sleeve Length	Sleeveless

Product Description:

This One Shoulder Tube Dress is a fashion style for women. It is specially designed with a one shoulder neckline and comes in sizes S, M, and L. The dress is available in customizable colors and solid pattern type. It is an elegant and sophisticated piece of fashion dress for women, perfect for all occasions. The one shoulder style adds a glamorous touch to any look. With its timeless design, this dress is sure to be a timeless favorite in your wardrobe.

Features:

Product Name: One Shoulder Tube Dress
Size: S,M,L

Length: Long,Short
Silhouette: A-Line
Style: One Shoulder
Neckline: One Shoulder
Trendy Dresses for Women: yes
Latest Stylish Dress for Ladies: yes
Stylish Clothes for Women: yes

Applications:

If you are looking for the perfect new dress styles for ladies, then you must take a look at our One Shoulder Tube Dress. It is made from a combination of high quality Cotton and Polyester Fibre, giving it a soft and comfortable feel. With its natural waistline and one shoulder style, this dress is both stylish and chic. It also features no decorations, making it perfect for wearing in any season, from spring to autumn. This dress is the perfect choice for ladies who want to stay on trend and look their best.

Customization:

Customize your perfect one-shoulder tube dress with us! Choose from a variety of trendy dresses for women, stylish frocks for women, and long dress styles for ladies. Our one-shoulder tube dress is made from high-quality materials with Place of Origin from China. You can choose from a variety of seasons such as Spring, Summer, and Autumn. Our dress is designed with a solid pattern type and is suitable for casual occasions. It also comes with a sleeveless sleeve length.

FAQ:

Q: What is the Place of Origin of the One Shoulder Tube Dress?

A: The Place of Origin of the One Shoulder Tube Dress is China.

Q: What material is the One Shoulder Tube Dress made of?

A: The One Shoulder Tube Dress is made of Cotton.

Q: What design features does the One Shoulder Tube Dress have?

A: The One Shoulder Tube Dress has a one shoulder design with a tube-like shape.

Q: What colors does the One Shoulder Tube Dress come in?

A: The One Shoulder Tube Dress comes in a variety of colors, including black, white, pink, and blue.

Q: What sizes does the One Shoulder Tube Dress come in?

A: The One Shoulder Tube Dress comes in sizes ranging from XS to XL.

VINAS DRESS Guangzhou Vinas clothing technology Co., LTD



15827133024



leopeng15827133024@gmail.com



stylishladydress.com

Building F, No. 3 Nanpu Nangui Road, Luopu Street, Panyu District, Guangzhou City